

Jaguar Pathways

Past, Present, and Future

Brenda Airo-Dyer
Laura Gershuni
Ryan Lennon
Isabelle Saber
Rachel Fischer
Cynthia McGregor
Steven Baissa



SOUTHWESTERN COLLEGE

Pathways: A Call to Action

- A student-centered, equity-focused framework for reform.
 - Clear enrollment avenues, paths for students, support services, remove systematic obstacles to success.
- Helps students explore, choose, plan, and complete programs that lead to careers.
 - Making hidden curriculum visible
- The Four Pillars of Pathways
 - Clarify the path
 - Enter the path
 - Stay on the path
 - Ensure learning

Four Pillars of Guided Pathways



Create clear curricular pathways to employment and further education.



Help students choose and enter their pathway.

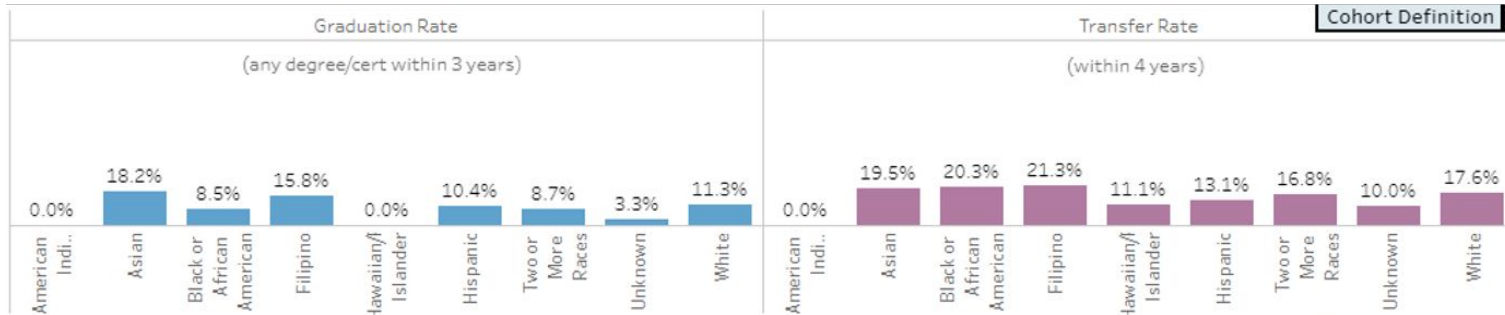


Help students stay on their path.



Ensure that learning is happening with intentional outcomes.

Data Driven



Disproportionate Impact Analysis (PPG-1)

Legend: ■ GAP ■ No Gap ■ Supressed Less than or equal to 10

	2017-18		2018-19	
American Indian/Alaskan Native	Supressed	*	Supressed	*
Asian	1.7%	7.6%	8.3%	5.1%
Black or African American	-3.6%	-2.3%	4.7%	6.1%
Filipino	6.9%	5.4%	8.6%	7.4%
Hawaiian/Pacific Islander	-5.4%	-10.8%	-11.2%	-3.3%
Hispanic	-1.9%	-1.4%	-5.8%	-5.7%
Two or More Races	2.3%	-2.1%	3.5%	2.4%
Unknown	-5.4%	-7.5%	1.3%	-4.5%
White	0.6%	0.6%	2.0%	3.4%

<https://public.tableau.com/app/profile/southwesterncollege/viz/2022StudentEquityPlanSWC/DisaggregatedMetrics?publish=yes>

Jaguar Pathways at SWC

- Spring 2017: Application to be a Guided Pathways College
- Summer 2018: Guided Pathways Convening in Palm Springs
- Fall 2018: Named Jaguar Pathways, 11 Fields of Study formed

Four Pillars of Guided Pathways

Foundational Projects

Clarify the Path



Program Maps
 Fields of Study
 Early Career Exploration
 CCC MyPath
 Expanded Outreach

Enter the Path



Support Program Videos
 Webpages Updated
 Secret Shopper
 Outreach & Onboarding
 Analysis

Stay on the Path



Student Journey Map
 Program Maps

Ensure Learning



Ensuring Learning
 Curriculum
 AETA
 Equity Coaching
 Data Literacy
 Data Coaches
 SCC Restructure

Four Pillars of Guided Pathways

Alignment & Implementation Continues

Clarify the Path



Student Journey Map
 Program Maps
 Fields of Study
 Early Career Exploration
 CCC MyPath
 Expanded Outreach

Enter the Path



Student Journey Map
 Program Maps
 Fields of Study
 Tracks & Blocks
 High Touch Onboarding
 Differentiated Orientation
 Embedded Career Planning
 CRM/Recruitment Tech

Stay on the Path



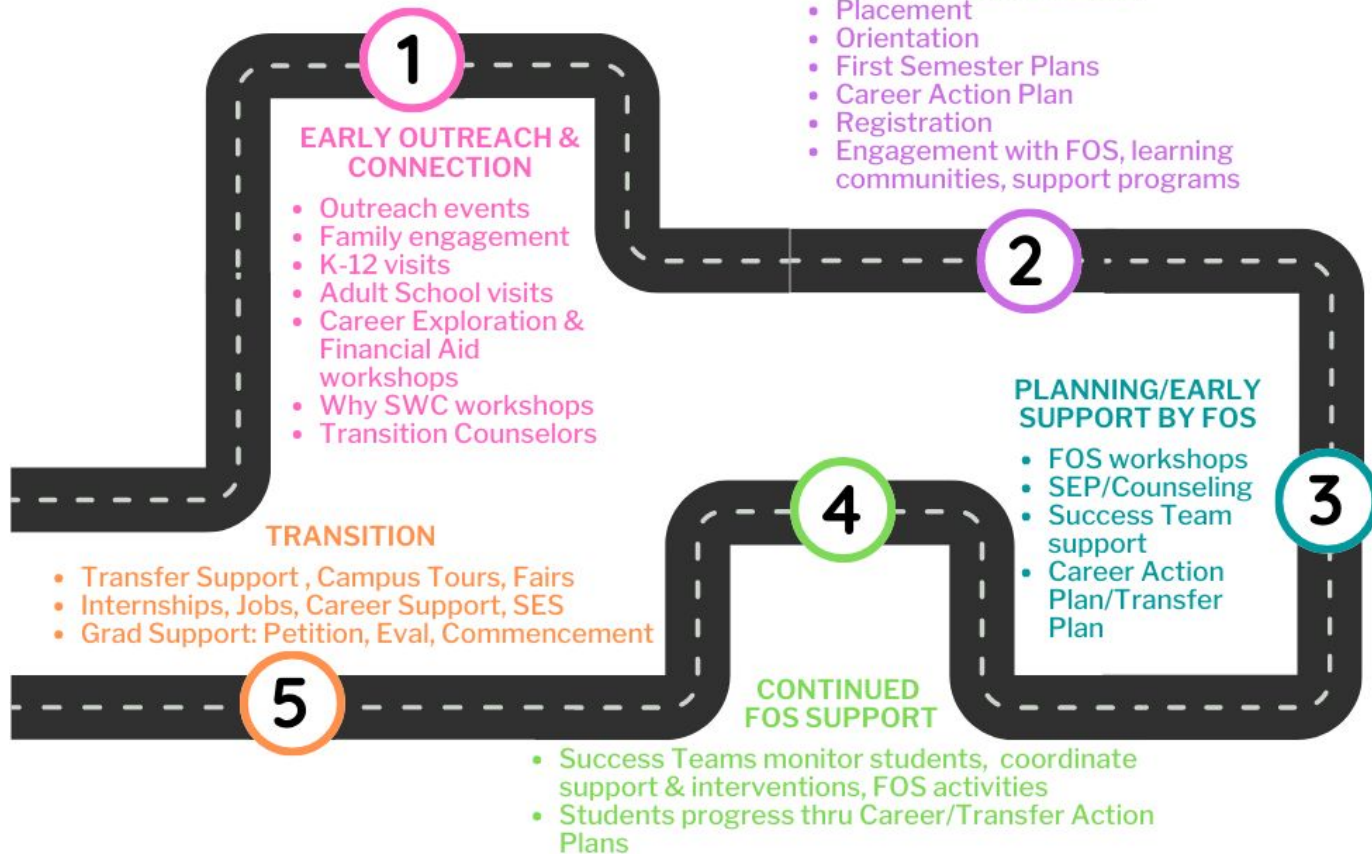
Student Journey Map
 Program Maps
 Fields of Study
 Tracks & Blocks
 Student Success Teams
 Almost Grad/Auto Grad
 Career Education Plans
 Retention/Early Alert Tech

Ensure Learning



Fields of Study
 Student Success Teams
 Ensuring Learning Curriculum
 AETA
 Equity Coaching
 Work Based Learning
 Data Literacy
 Data Coaches
 SCC Restructure

STUDENT JOURNEY MAP



Four Pillars of Guided Pathways

Alignment & Implementation Continues

Clarify the Path



Student Journey Map
 Program Maps
 Fields of Study
 Early Career Exploration
 CCC MyPath
 Expanded Outreach

Enter the Path



Student Journey Map
 Program Maps
 Fields of Study
 Tracks & Blocks
 High Touch Onboarding
 Differentiated Orientation
 Embedded Career Planning
 CRM/Recruitment Tech

Stay on the Path



Student Journey Map
 Program Maps
 Fields of Study
 Tracks & Blocks
 Student Success Teams
 Almost Grad/Auto Grad
 Career Education Plans
 Retention/Early Alert Tech

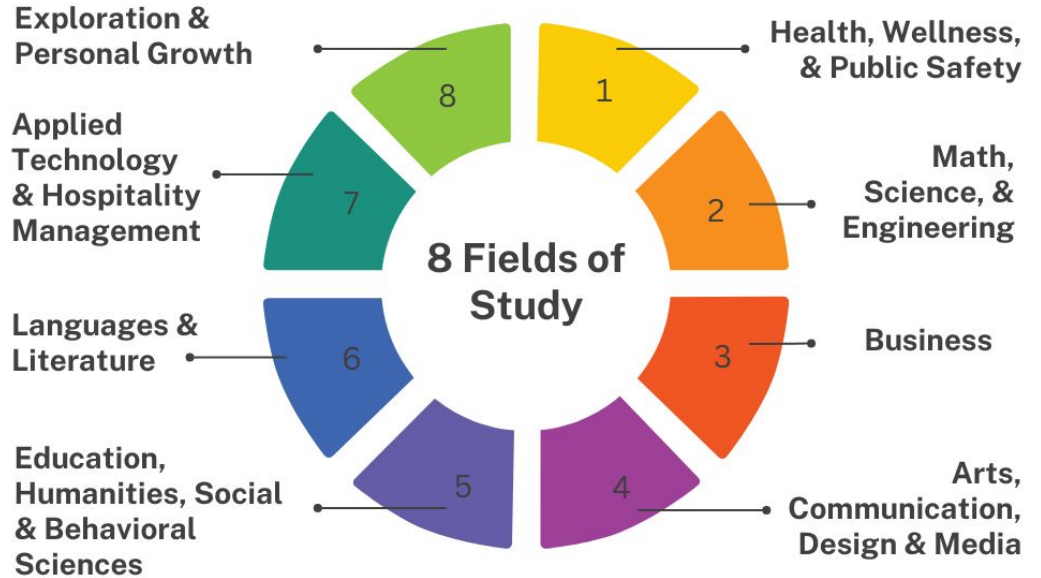
Ensure Learning



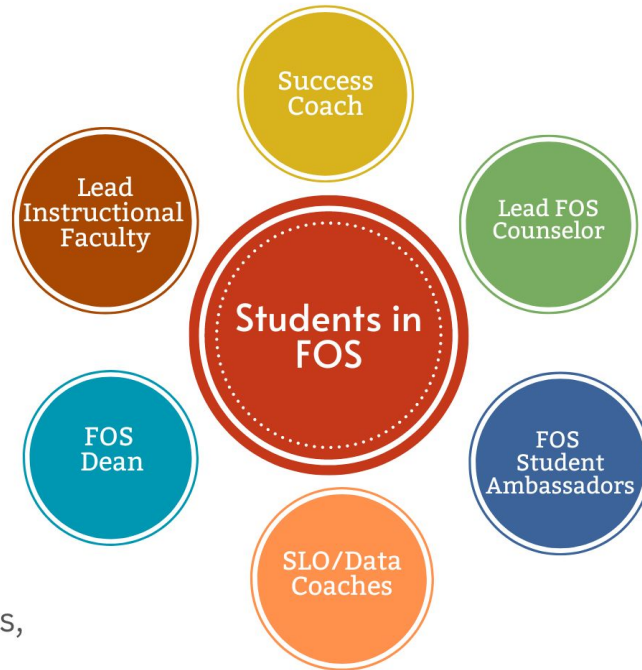
Fields of Study
 Student Success Teams
 Ensuring Learning Curriculum
 AETA
 Equity Coaching
 Work Based Learning
 Data Literacy
 Data Coaches
 SCC Restructure

8 Fields of Study

Implementation
and Timeline



Example Student Success Team



Resource Members:
Financial Aid, Job Developers,
Basic Needs, etc.

- Wraparound, collaborative support
- Each Field of Study will have a Student Success Team
- Design is in progress, seeking input

Everyone is on the Team



Jaguar Pathways creates a holistic team
to support our students