

**Project Overview**

Current Status /Phase	Bidding
Construction Type	Academic
Gross Square Footage	21,000
Division of State Architect	04-119554
Construction Method	
Project Life-Span	

**Project Financials**

Funded By	Measure Z
Programmed Budget	\$20,000,000
Expenditures to Date	\$1,461,762

**Project Teams**

Architect	Gensler
Structural Engineer	Wiseman + Roy
Civil Engineer	Nolte Associates, Inc. (NV5)
Electrical Engineer	Syska Hennessy Group
Mechanical Engineer	Syska Hennessy Group
SWC Project Manager	Ben Baker
Construction Manager	N/A
DSA Inspector	TBD

**Site Detail**

Campus	HEC Otay Mesa Campus
Coordinates	32.563175, -116.966910

**Project Schedule**

Programming	Design and DSA Finish	Construction Finish	FFE & Move-In Finish
Summer 2018	Spring 2021	Fall 2023	Fall 2023

**Project Insight**

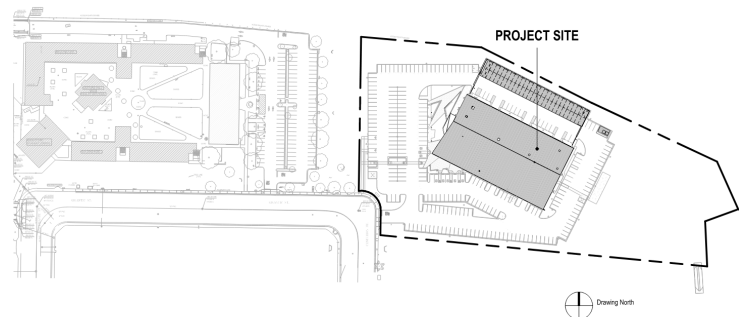
The new Automotive Technology Center will be constructed at the Otay Mesa Higher Education Center. The 56,000 SF to 59,000 SF one-story building area will consist of a learning environment project program which includes offices, classrooms, high bay labs, student project spaces, workshops for welding and areas and storage for project cars. The project will incorporate flexibility for the evolving technology in the automotive industry. The design of the buildings systems and spaces plan to allow for growth and change. The building spaces consist of classrooms, auto service areas, wash bays, tool rooms and shops, offices, lobby, and other amenities spaces.



**Project Features**

- New 56,000+ Square Foot Academic Facility
- Facility to include offices, classrooms, high bay labs, student project spaces, project storage space
- Design lends to allow for growth and change with the evolving automotive technology industry

**Project Site Plan**



**Project Budget Distribution**

