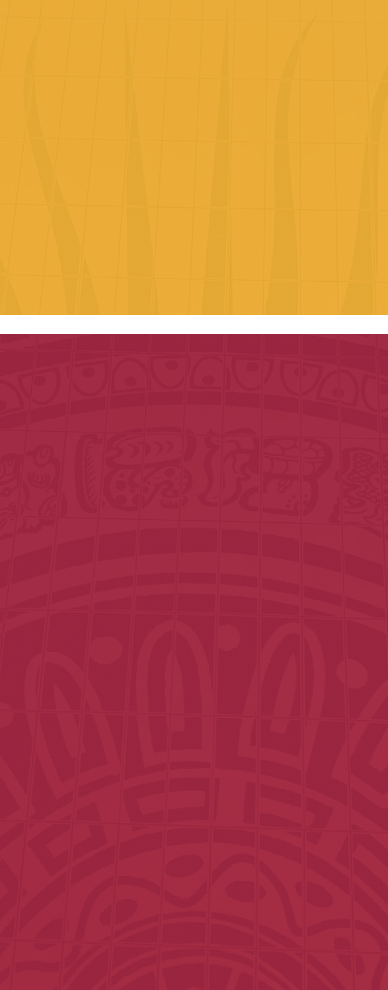




SOUTHWESTERN COLLEGE PROPOSITION R & Z

2020 ANNUAL REPORT



LETTER FROM THE CHAIR

Thank you for your time. I am very pleased to present the annual report for the Propositions R and Z Citizens' Bond Oversight Committee.

We congratulate our district staff, architects, engineers and construction workers who as essential workers have continued district projects while incorporating the evolving guidance and health directives from both local, county and State agencies. District staff has also continued to hold planning and design virtual meetings with the architects and engineers with no major impact on project schedules.

Southwestern College's commitment to transparency in the implementation of Propositions R and Z has resulted in the bond program earning a near perfect score from the San Diego Taxpayers Educational Foundation. As the Chair of the Citizens' Bond Oversight Committee, it brings me great pride to represent our community in monitoring these projects.

We welcomed new members to the committee last year: Paul Norris, senior citizen group representative; Gary Paquette, senior citizen group representative; and David Aw, student representative. We thank our outgoing representatives for their years of service to our community: Herschel Kenner, senior citizen representative and Christian Sanchez, student representative.

We encourage all community members to read about our progress on both Propositions R and Z in the following pages. You can also keep up-to-date by visiting the bond website: www.swccd.edu/propr. On the website, you can request a presentation to your community, have your name added to our mailing list, or leave a comment.

Thank you for your continued support of the students and employees of Southwestern College.

Mark Donnelly, Chair

Cover photo: Sunburst located on north side of new Performing Arts Center

PERFORMING ARTS CENTER (PAC)

The PAC is located on the northeastern portion of the Southwestern College Chula Vista campus. The center will serve students and the community by hosting public events and cultural engagements. The center includes a 500-seat theater, auditorium and stage, a 170-seat black box theater, classrooms and a modern stagecraft/prop construction area.

Project Budget: \$67 million.

Project Status: Scheduled completion in Spring 2021

WAYFINDING



The Wayfinding project is a comprehensive signage installation project to improve pedestrian and vehicular navigation, orientation and direction around the Chula Vista campus. The project includes the construction of concrete monolith signs designed to complement the historic Southwestern College architecture and custom-fabricated metal cabinet signs. In total, there are more than 1,000 pedestrian directional, vehicular directional, illuminated building number, illuminated campus directory, campus identification, building identification, parking lot identification, street names and room number signs.

Project Budget: \$3 million

Project Status: Complete

PUBLIC SAFETY TRAINING CENTER (PSTC)



The Public Safety Training Center at the Higher Education Center at Otay Mesa provides new facilities for Southwestern College's Police, Fire and Emergency Medical Technician (EMT)/Paramedic programs. New facilities include: multi-bay apparatus building to house the emergency vehicles for all three programs; storage building; a multi-purpose instructional building that includes office space, classroom space, restroom/locker rooms, police simulator space and a fitness training space. A "Scenario Apartment Simulator" is also programmed to support police and EMT/Paramedic simulated scenario training. A multi-story fire tower for live fire training and a renovated fitness track for the police obstacle course/fitness area complete the training center. **Drone footage** of project progress.

Project Budget: \$25.7 million.

Project Status: Scheduled completion in Summer 2021

PARKING LOTS M AND N

Lots M and N-between the Learning Resource Center and the Math, Science and Engineering Building is being repurposed to serve as interim facilities to support the Student Union and Instructional Building No. 1 demolition and construction. The previous plan of using the facilities for the Jaguar Village to house student learning communities is on hold, pending review of space options within existing district facilities and timing nearer to when planned construction starts on the Student Union Complex.

Project Budget: \$5.9 million.

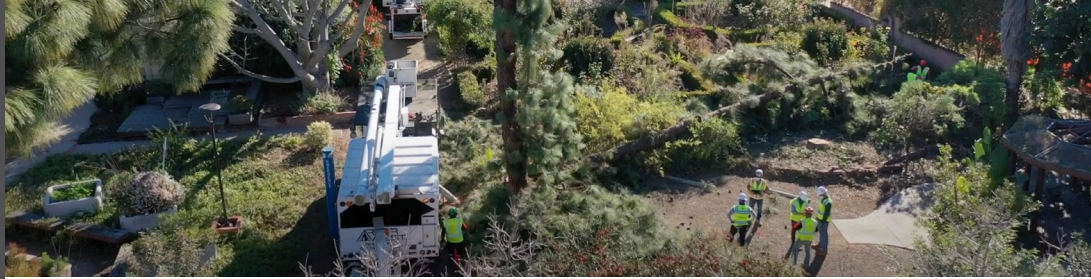
Project Status: Complete

BASEBALL & SOFTBALL FACILITIES UPGRADES

A new, expanded baseball press box will allow home and visiting coaches to view play and include areas for the press and announcer. A much-needed restroom building will be constructed at the softball field. Both site areas will have fully accessible paths from parking areas. A new firemain will be looped in close proximity to each site so new fire hydrants can be installed at each area. Additionally, a new sewer and water line will be provided to the baseball site for potential future expansion.

Project Budget: \$1.9 million.

Project Status: In design



Workers prepare to move specimen trees to preserve them while construction continues on the new Landscape and Nursery Technology project.

LANDSCAPE AND NURSERY TECHNOLOGY

The South Bay Botanic Garden is an always evolving classroom and rich resource for teaching and learning about design, construction, maintenance, nursery production and all landscape-related professions. Support facilities, including a greenhouse, will complement the classroom building. Specimen trees are currently being relocated to an on-campus temporary nursery in anticipation of the construction start. **Promotional video.**

Project Budget: \$29.7 million.

Project Status: Construction scheduled to begin in summer 2021



Rendering of the Landscape and Nursery Technology learning facilities.

INSTRUCTIONAL BUILDING I

The project includes a range of teaching and learning spaces, lecture classrooms, a planetarium, active classrooms for hands-on learning and spaces for peer-to-peer collaboration and instructional project work. Faculty offices and support space are included and organized to support the Jaguar Pathways academic reform efforts. Additionally, the instructional space will be shared with a University Center, creating an efficient use of space for both the district and various four-year university programs.

Project Budget: \$94 million.

Project Status: In design

STUDENT UNION COMPLEX

This project in the heart of the Chula Vista campus will offer a range of activities and spaces for students to gather, socialize and interact with their peers. Balancing a number of small, discrete spaces with larger, flexible spaces, the Student Union will house the Associated Student Organization (ASO), bookstore, SWC Cares Hub, culinary arts, learning communities, the Veterans' Resource Center and Health and Personal Wellness facilities. Food service and dining areas will connect indoor and outdoor terraces and patios. The new facility replaces the existing Student Union and cafeteria buildings.

Project Budget: \$91.5 million.

Project Status: In design

AUTOMOTIVE TECHNOLOGY RELOCATION

A new 59,000-square-foot, one-story Automotive Technology Center will be built at the Higher Education Center at Otay Mesa, replacing the aging facility on the Chula Vista campus. The center includes offices, classrooms, high-bay labs, student project spaces, workshops for welding and areas to store project cars. The project will incorporate flexibility for the evolving technology in the automotive industry and the design allows for growth and change.



Trenches being dug in preparation for new Automotive Technology Program facilities.

Project Budget: \$20 million.

Project Status: Design complete and in review with Division of State Architect

IT DATA CENTER

This single-story Institutional Technology Building is located where the former 300 Buildings were demolished. At approximately 16,100 square feet, the building includes offices, classrooms, data center, network spaces and IT support spaces. Additionally the facility project scope includes solar panels, landscape and hardscape site improvements and new surrounding sidewalks to improve pedestrian circulation and accessibility.

Project Budget: \$25.6 million.

Project Status: In review with Division of State Architect; construction to begin mid-2021



Rendering of new Tennis Court Complex and facilities.

TENNIS COURT RELOCATION

Relocating the tennis court complex to Parking Lot G (by the Child Development Center) allows for 10 new, state-of-the-art tennis courts, including a centralized championship court with spectator seating and access to a new clubhouse. The clubhouse includes a women's team room, accessible restrooms, sports medicine spaces, coach's office and functionality to service after-school student programs. The project includes upgraded lighting to allow community use in the evening.

Project Budget: \$8 million.

Project Status: In design

ON THE HORIZON

Several other projects on the Chula Vista campus are being planned. They include:

- Relocating and consolidating Facilities Operations and Warehouse. Project budget is \$40.6 million.
- Bus Transit Relocation: Moving the existing transit station from the ring road closer to Otay Lakes Road. Project budget is \$2.3 million.

ANNUAL PERFORMANCE AND FINANCIAL AUDITS

The independent auditing firm of The Pun Group conducted an audit of the internal controls, finances and performance of Propositions R and Z. In a report provided to the Governing Board, the auditing firm has found the district's internal financial controls to be in compliance with Governing Auditing Standards.

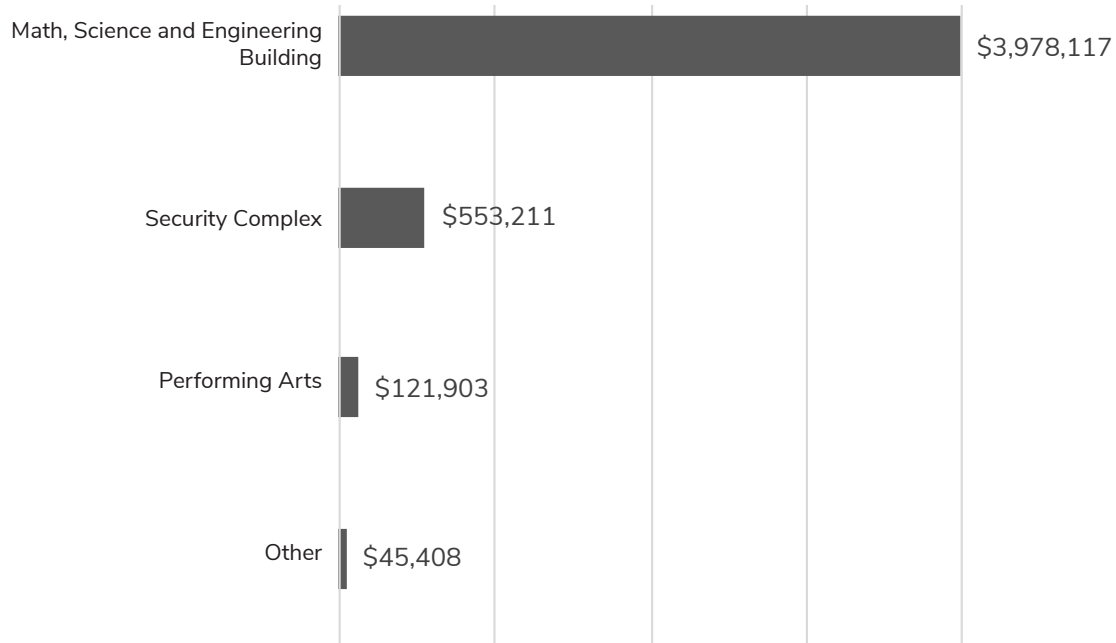
ABOUT PROPOSITIONS R AND Z

Proposition R is the \$389 million general obligation bond approved by voters in 2008. Proposition Z is the \$400 million general obligation bond approved by voters in 2016. Proceeds from the bonds are to be used for the construction/reconstruction and/or rehabilitation of facilities, including the furnishing and equipping of facilities, acquisition, or lease of real property for its facilities and construction management by district personnel.

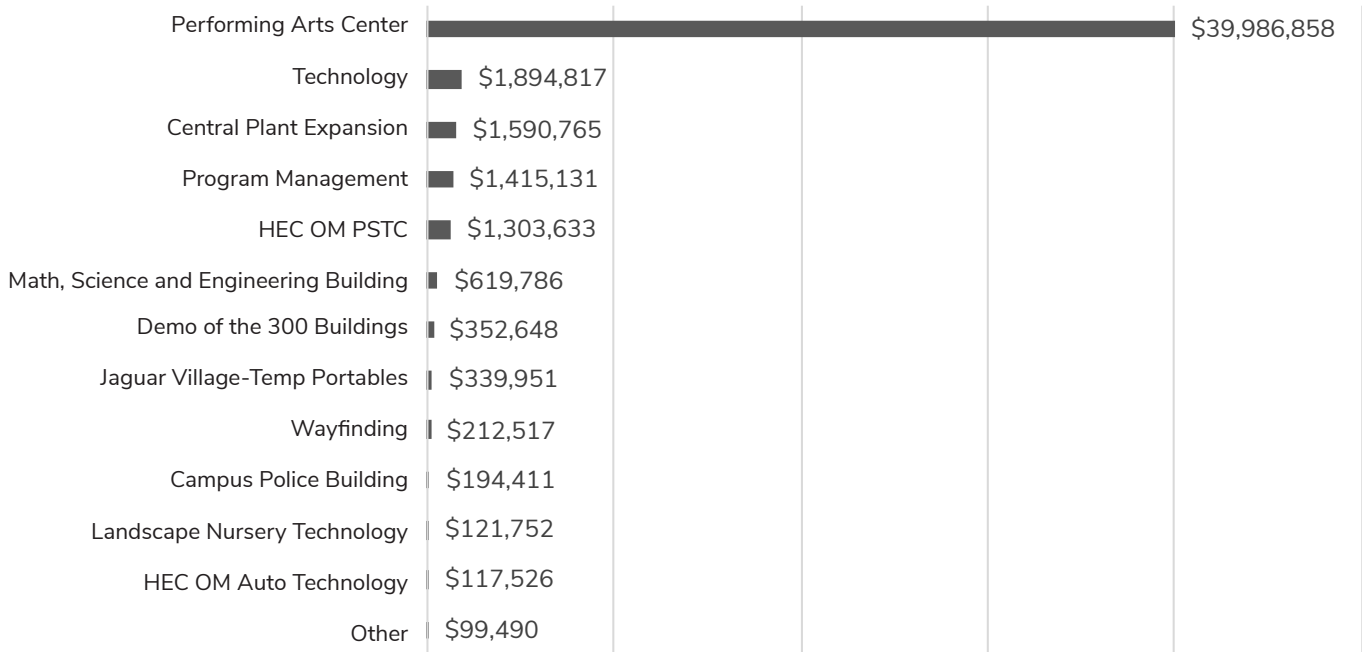


The Public Safety Training Center at the Higher Education Center at Otay Mesa is taking shape.

PROP R EXPENDITURES PER PROJECT



PROP Z EXPENDITURES PER PROJECT



Expenditures from July 1, 2019–June 30, 2020

CITIZENS' BOND OVERSIGHT COMMITTEE MEMBERS

David Aw, Student Representative

Mark Donnelly, Business Representative

Norma Hernandez, Advisory or
Foundation Representative

Rodolfo Lopez, Jr., At-Large Community
Representative

Nick Marinovich, Taxpayer Organization
Representative

Paul Norris, Senior Citizen Group
Representative

Gary Paquette, Senior Citizen Group
Representative

Clarissa Reyes Falcon, At-Large
Community Representative

SOUTHWESTERN COMMUNITY COLLEGE GOVERNING BOARD

Roberto Alcantar

Leticia Cazares

Griselda A. Delgado

Don Dumas

Kirin Macapugay

Melkitsedeq Hernandez, Student Trustee

Dr. Mark Sanchez
Superintendent/President



The Southwestern Community College District does not discriminate on the basis of race, color, religion, national origin, gender, sexual orientation, disability, age, or marital status in any of its policies, procedures, or practices. This nondiscrimination policy covers admission, employment, and access to all college programs and activities. Questions about the Rehabilitation Act of 1973, Section 504, and student grievances should be directed to the Dean of Student Services, at 619-482-6369. Title IX inquiries should be directed to the Title IX Administrator, at 619-482-6329. Inquiries regarding Equal Employment Opportunity and other nondiscrimination policies and procedures should be directed to the Executive Assistant Superintendent/Vice President, Human Resources 619-482-6329.

To request this material in an alternate format, contact Disability Support Services at (619) 482-6512 or TTY (619) 482-6470