

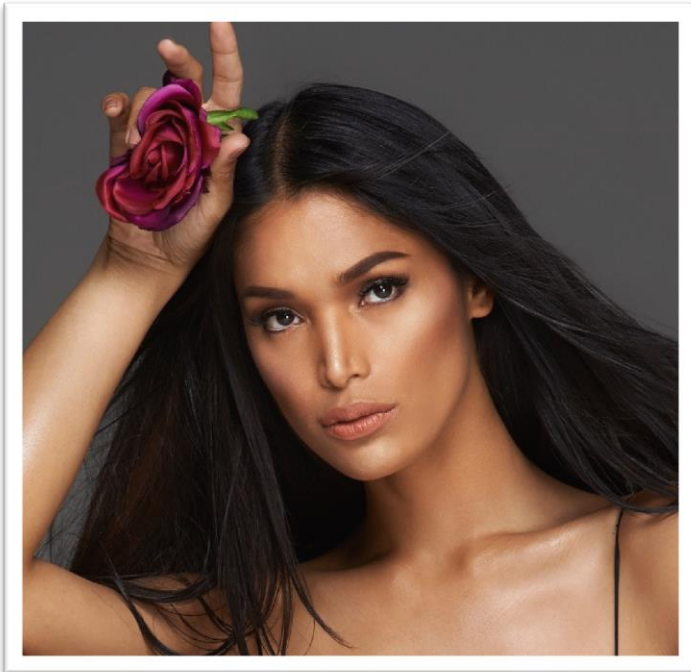
*Standing United...weCultivate*

**OPENING DAY–SPRING 2017**

**Friday, January 27**

**AGENDA**

<b>8:00 – 8:30 a.m.</b>	<p><b>Constituent Group Meetings</b>  <u>Optional Participation</u>   Continental Breakfast</p> <p><b>Classified Professionals</b>  <b>Confidentials</b>  <b>Faculty (Full-time/Part-time)</b>  <b>Administrators</b></p>	<p><b>Mayan Hall</b>  <b>L246</b>  <b>Cafeteria/East</b>  <b>L238 N/S</b></p>
<b>----- Opening Day Program Begins -----</b>		
<b>8:40 – 8:45 a.m.</b>	<p><b><i>Godspell Musical Presentation</i></b>  Ruff Yeager, Assistant Professor, Theater</p>	<b>Gymnasium</b>
<b>8:45 – 8:47 a.m.</b>	<p><b>Welcome</b>  Trinda Best, MPA, Vice President for Human Resources</p>	
<b>8:47 – 8:50 a.m.</b>	<p><b>Student Speaker</b>  Jose Gutierrez, A.S.O. Executive Vice President</p>	
<b>8:50 – 9:05 a.m.</b>	<p><b>College Address</b>  Kindred Murillo, Ed.D., Superintendent/President</p>	
<b>9:05 – 9:45 a.m.</b>	<p><b><i>“GENDER PROUD”</i></b>  <b>Geena Rocero, Keynote Speaker</b></p>	
<b>9:45 – 9:50 a.m.</b>	<p><b>Safe Zone Program Introduction</b>  Dan Cordero, Student</p>	
<b>9:50 – 9:55 a.m.</b>	<p><b>SLO &amp; AUO Introduction</b>  Andrew Rempt, Academic Senate President</p>	
<b>10:05 – 12:40 p.m.</b>	<p><b>SLO &amp; AUO</b>  <b>Faculty Student Learning Outcomes (SLO) Sessions</b>  Full-time and Part-time Faculty will meet to participate in a discussion of SLO, review data and assess program effectiveness.</p> <p><b>Administrative Unit Outcomes (AUO) Sessions</b>  Administrators and Classified Professionals will meet to review data and assess program effectiveness.</p>	<p><b>Locations</b>  <b>Pgs. 3-4</b></p> <p><b>Pgs. 4-5</b></p>
<b>----- Opening Day Program Ends -----</b>		
<b>12:50 – 1:50 p.m.</b>	<b>Center/School/Office Meetings</b>	<b>Pgs. 5-6</b>



## GEENA ROCERO

Geena Rocero, born and raised in Manila, Philippines, is a Model, Producer, Trans Rights Advocate and host of the new USA Network TV Show ASPIREist.

On March 31, 2014, in honor of International Transgender Day of Visibility, Rocero came out as transgender at the annual TED

Conference, her talk has since been viewed almost 3 million times. Geena is the founder of Gender Proud, an advocacy and media production company that tells stories to elevate justice and equality for the transgender community.

She recently produced and presented "Beautiful As I Want to Be" on LogoTV highlighting trans youth, for which they received a 2016 GLAAD media Award.

Geena has spoken at the White House, United Nations, and been featured on E's I am Cait, Magazine Cover of Candy Magazine, Vanity Fair: Trans America, Marriott's #LoveTravels Campaign and CoverGirl Cosmetics #GirlsCan Campaign.

She has been featured in media publications such as CNN, Al Jazeera America, MSNBC, Today Show, NHK World Channel, HuffPost Live, New York Magazine, Mashable, Glamour, Cosmopolitan, Vanity Fair, Elle, Entertainment Weekly, People, Variety, Take Part, The Advocate, MTV and others.

10:05–12:40PM	FACULTY SLO SESSIONS	LOCATIONS
	<u>Full-time and Part-time Faculty</u> will meet to participate in a discussion of SLO, review data and assess program effectiveness.	
	<b>Higher Education Center at Otay Mesa, and Higher Education Center at San Ysidro</b>	
	Administration of Justice/Police Academy	512
	EMTP/ENT/FS	564 A
	Family Studies	553
	Nursing	565
	<b>Higher Education Center at National City, and Crown Cove Aquatic Center</b>	
	Dental Hygiene	511
	MLT	432
	MedOp	461
	<b>Instructional Support Services</b>	
	Continuing Education/Non-Credit	662
	Library Faculty	L244
	<b>School of Arts, Communication, and Social Sciences</b>	
	African American/Asian American/History/ Mexican American/Social and Cultural Studies	561
	Anthropology	701
	Art/Visual	751
	Communication	471
	Dance	473
	Journalism	462
	Music	852
	Psychology	853
	Political Science	463
	Recording Arts and Technology	464
	Sociology	472
	Telemedia	474
	Theatre Arts	475
	<b>School of Business and Technology</b>	
	Applied Technology	542
	Business and Office Information Systems	202/203
	Computer Information Systems	543
	<b>School of Counseling and Student Support Programs</b>	
	Counseling and Personal Development	342
	Disability Support Services	436
	<b>School of Language, Literature, and Humanities</b>	
	English	Cafeteria/East

**PROFESSIONAL DEVELOPMENT PROGRAM**

**School of Language, Literature, and Humanities (continuation)**

ESL	476
Philosophy & Humanities	477
Reading	478
World Languages	510

**School of Mathematics, Science, and Engineering**

Astronomy	226
Biology	228
Chemistry	391
Engineering	392
Geology/Geography	397
Mathematics	805
Physics	398

**School of Wellness, Exercise Science, and Athletics**

Exercise Science	H303
Health	H304

**10:05–12:40PM ADMINISTRATIVE UNIT OUTCOMES (AUO) SESSIONS LOCATIONS**

Administrators and Classified Professionals will meet to review data and assess program effectiveness.

**Superintendent/President Areas**

Office of the Superintendent/President	100 A
Academic Senate	104
Communications, Community, and Gov. Relations	103 C
Foundation	105 A
Institutional Effectiveness	105 B
Institutional Research, Planning, and Grants	105 C
Institutional Technology	217

**Academic Affairs Areas**

Office of the Vice President for Academic Affairs	213
Instructional Support Services	Library
Higher Education Center at National City	L238 N/S
Higher Education Center at Otay Mesa	H312
Higher Education Center at San Ysidro	563 B
School of Arts, Communication, and Social Sciences	704 A/B
School of Business and Technology	470 K
School of Language, Literature, and Humanities	550 L
School of Mathematics, Science, and Engineering	214
School of Wellness, Exercise Science and Athletics	H402

**Business and Financial Affairs Areas**

Office of the Vice President for Business and Financial Affairs	1652 A
Bookstore	566

**PROFESSIONAL DEVELOPMENT PROGRAM**

**Business and Financial Affairs Areas (continuation)**

Facilities, Operations, and Planning	GYM
Finance	1665
Food Services	Staff Lounge
Payroll	1651 C
Procurement, Central Services, and Risk Management	1601

**Human Resources Areas**

Office of the Vice President for Human Resources	H301
Benefits	
Human Resources	
Professional Development Program	
College Police	H302

**Student Affairs Areas**

Office of the Vice President for Student Affairs	S105
Office of Counseling and Student Support Programs	S202
Office of Equity, Diversity, and Inclusion	101
Admissions and Records	S209
Evaluations	
Outreach	
Disability Support Services	421
EOPS & CARE	S203
CalWORKs	
Financial Aid	345
Veterans Services	
Student Activities	ASO Cntr.
Health Services	
Personal Wellness	
Student Employment Services	Transfer Cntr.
Assessment/Prerequisites	
Career Center	
Transfer Center	

**----- Professional Development Ends -----**

<b>12:50–1:50PM</b>	<b>Center/School/Office Meetings</b>	<b>LOCATIONS</b>
	Higher Education Center at Otay Mesa, and Higher Education Center at San Ysidro	H312
	Higher Education Center at National City – ALL DEPARTMENTS	L238 N/S
	Instructional Support Services – ALL DEPARTMENTS	Library
	School of Arts, Communication, and Social Sciences	751
	School of Business and Technology	214
	School of Counseling and Student Support Program	Transfer Cntr.

**PROFESSIONAL DEVELOPMENT PROGRAM**

<b>12:50–1:50PM</b>	<b>Center/School/Office Meetings (continuation)</b>	<b>LOCATIONS</b>
	School of Language, Literature, and Humanities	Cafeteria/East
	School of Mathematics, Science, and Engineering	805
	School of Wellness, Exercise Science, and Athletics	H304

**THE FOOD PANTRY**

In a recent survey of Southwestern College students, 81% of those who responded said they did not have enough money to buy food. The Child Development Center & Department and the ASO have been working together to create a food pantry on the Chula Vista campus. The Professional Development Program is happy to support their efforts to address food insecurity among students. We hope you will join us in this support by bringing with you one or more items from the attached list for donation on Opening Day (See page 7)

SWC Campus Community,

The Child Development Center & Department along with ASO have teamed up to bring a **Food Pantry** to our campus. We are asking for donations of any of the items listed below. Please bring your offerings to the SWC gym on Spring 2017 Opening Day! For any other questions please contact Patie M. Bartow at [pbartow@swccd.edu](mailto:pbartow@swccd.edu).

- ❖ Meals in a can (stew, chili, soup)
- ❖ Tuna, salmon, sardines and canned meat
- ❖ Canned foods with pop-top lids
- ❖ Tuna and cracker packets
- ❖ Cheese and cracker packets
- ❖ Peanut and almond butter (small packets)
- ❖ Low-sugar hot and cold cereals (small-individual size)
- ❖ 100% fruit juices in single serving boxes
- ❖ 100% fruit rolls
- ❖ Canned fruit packed in juice
- ❖ Raisins (small boxes)
- ❖ Unsweetened applesauce
- ❖ Fruit cups
- ❖ Pretzels (small bags)
- ❖ Popcorn (small bags)
- ❖ Granola bars
- ❖ Protein bars
- ❖ Trail mix (small individualized packets)
- ❖ Peanuts, almonds & cashews (small individualized packets)
- ❖ Canned vegetable drinks
- ❖ Small bottled waters
- ❖ Plastic forks, knives & spoons
- ❖ Napkins
- ❖ Paper bags (all sizes)
- ❖ Small toiletries/personal care: shampoo, soap, tooth brush/paste, feminine needs

**Food Insecurity Planning Committee:**

- ❖ Patie M. Bartow            Director of Child Development Center ([pbartow@swccd.edu](mailto:pbartow@swccd.edu))
- ❖ Mona Dibas                ASO President ([ASOPRES@swccd.edu](mailto:ASOPRES@swccd.edu))
- ❖ Brett Robertson        Director of Student Development/Activities ([brobertson@swccd.edu](mailto:b Robertson@swccd.edu))
- ❖ Jenny Sabas                CD Adjunct Professor & CD Club Advisor ([jsabas@swccd.edu](mailto:jsabas@swccd.edu))
- ❖ Vacant                      ASO Outreach

*Future Pantry Location: Room 554; Child Development Lab/Resource Room*