



PROPOSITION R

MONTHLY EXECUTIVE UPDATE

PROGRAM UPDATE

MARCH 12, 2014

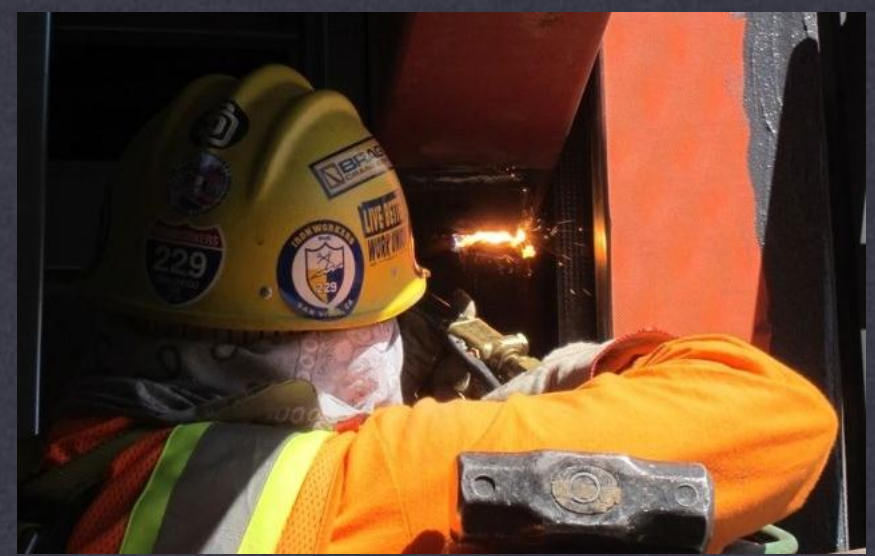
Field House Classroom Building

Accomplished in February

- * Continue interior framing, drywall and doors

Planned for March

- * Start interior finishes



FIELD HOUSE BUILDING

Framing Finishes and Exterior Doors

Central Plant Extension

Accomplished in February

- * Issued construction contract
- * Ordering materials

Planned for March

- * Late March construction start



Solar Initiative Project

Accomplished in February

- * Complete site surveys
- * Continue design work

Planned for March

- * Continue design work

Emergency Communication System

Accomplished in February

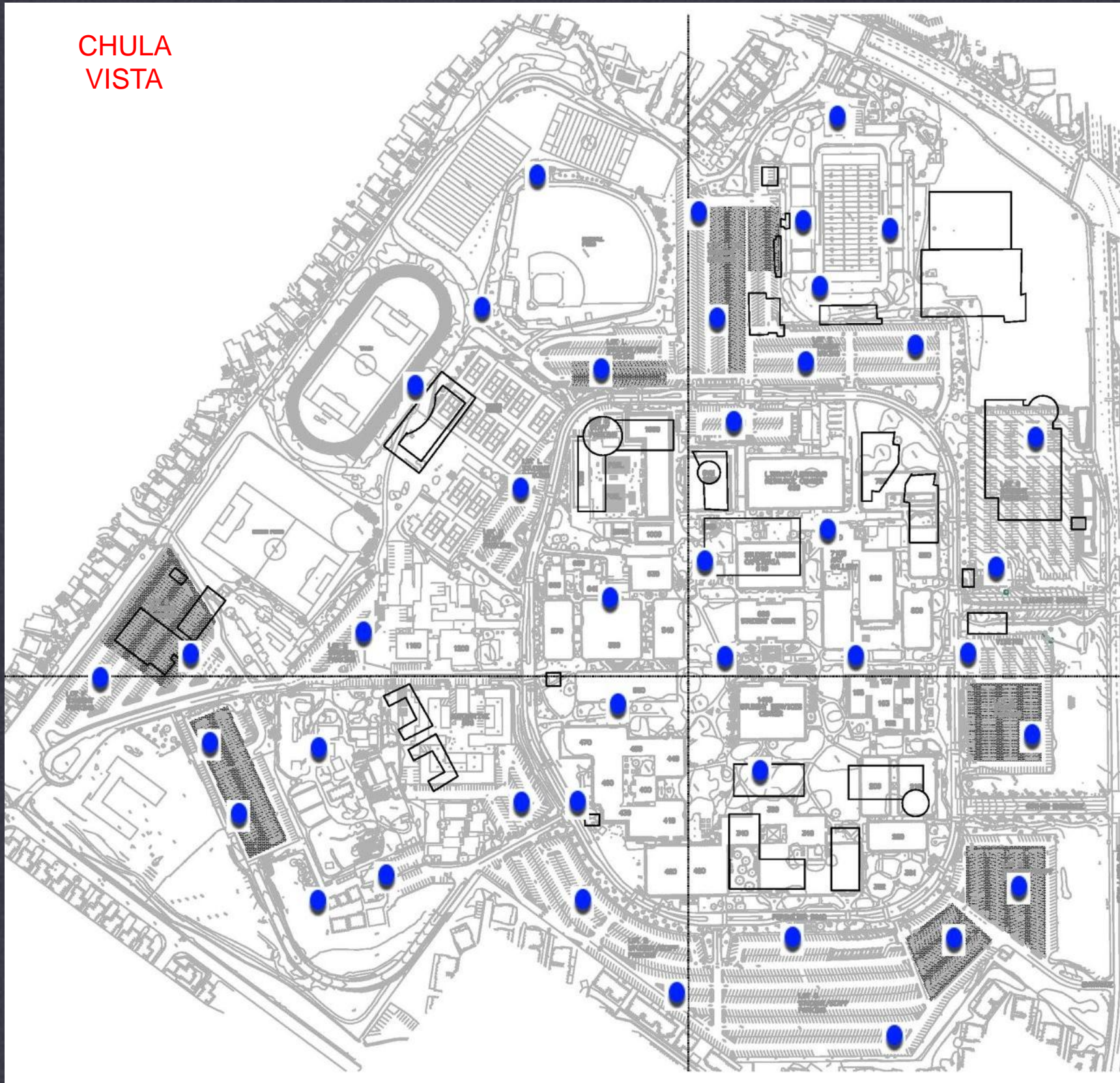
- * Completed design

Planned for March

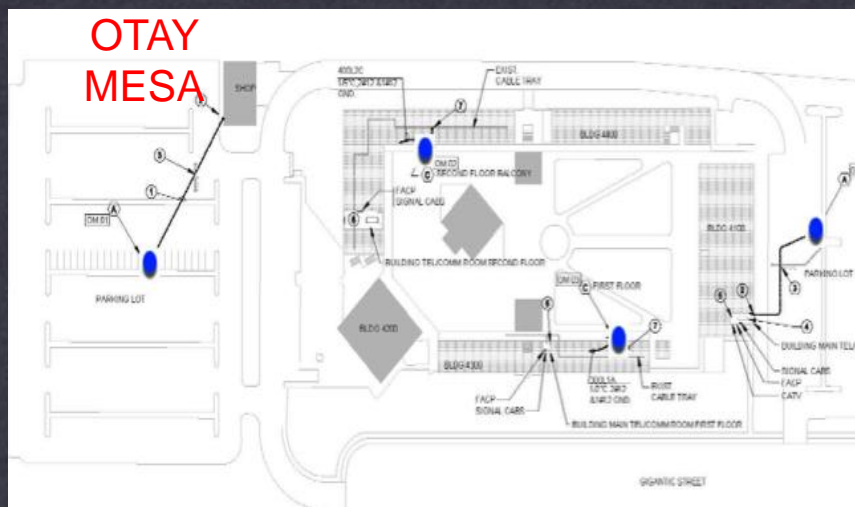
- * Design reviews



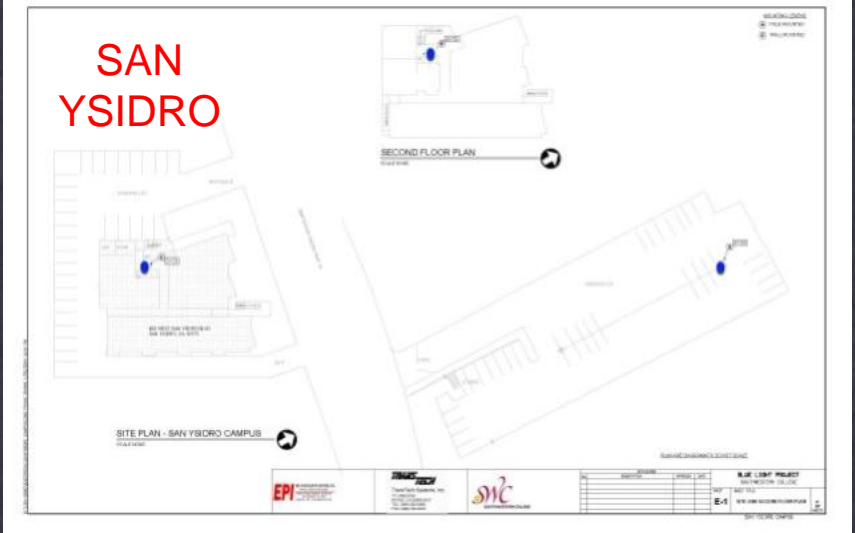
CHULA VISTA



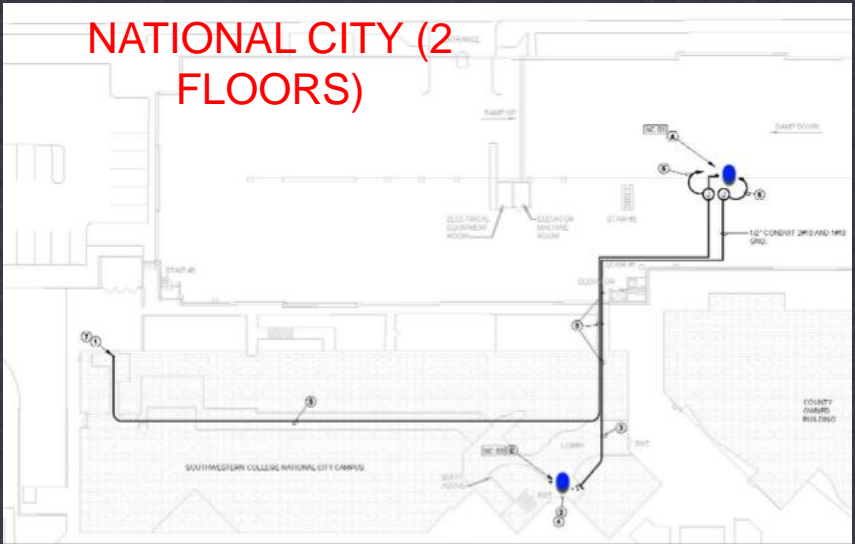
OTAY MESA



SAN YSIDRO



NATIONAL CITY (2 FLOORS)



EMERGENCY COMMUNICATION SYSTEM

CHULA VISTA CAMPUS AND HIGHER EDUCATION CENTERS

National City Phase II

Accomplished in February

- * Schematic design complete for District review
- * Geo-technical work complete

Planned for March

- * Meetings with National City planning department
- * Start environmental planning review (CEQA)

Wellness Center

Accomplished in February

- * Continuing programming phase
- * Weekly meetings with District and building user group

Planned for March

- * Start schematic development

Math and Science

Accomplished in February

- * Architect interviews

Planned for March

- * Board approval of recommended Architect
- * Start programming phase

Lot J Road Realignment

Accomplished in February

- * Construction start
- * Lot O expanded for interim parking

Planned for March

- * Continue construction



LOT J ROAD REALIGNMENT

IMPROVE VEHICLE ACCESS ROAD AND PARKING FOR SOLAR PANEL PLACEMENT

Performing Arts

Accomplished in February

- * Visit similar projects
- * Building user group developing architect short list for the proposal process from list of qualified architects



Planned for March

- * Issue request for proposal



Other Initiatives

Chula Vista Campus infrastructure survey
District Design Standards

- * Furniture and space layout
- * Audio visual equipment
- * Interior finishes

Fire and potable water line additions, Chula Vista campus

Small project Architect recommendation

- * Otay Mesa project

Classroom exterior lock upgrades





PROPOSITION R
MONTHLY EXECUTIVE UPDATE

PROJECT UPDATE
MARCH 12, 2014